

March 2021

Efficient and electric homes

The foundation of clean, sustainable energy use
for your life

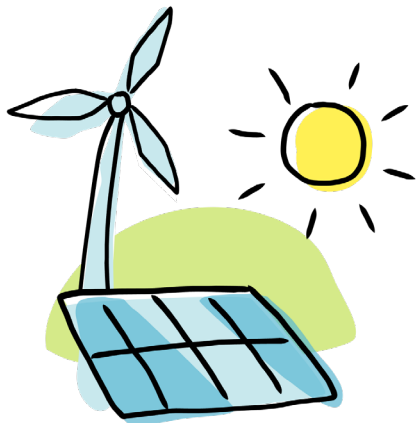


What is EBCE?

East Bay Community Energy (EBCE) is our local power supplier committed to providing Alameda County and the city of Tracy with cleaner, greener electricity at lower rates. EBCE reinvests earnings back into the community to create local green energy jobs, local energy programs, and clean power projects.

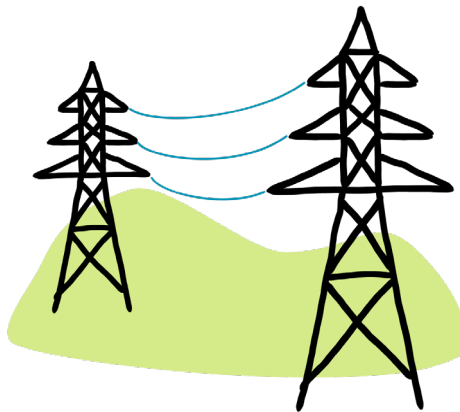


How it Works



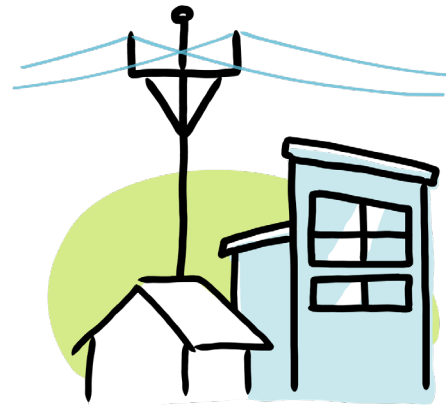
EBCE BUYS CLEAN POWER

EBCE buys from, and is building, clean power plants. EBCE sells the power to customers at low rates.



PG&E DELIVERS THE POWER

EBCE's power is delivered to customers by PG&E. Customers pay PG&E for power delivery as they always have.



YOU GET THE POWER AND ALL THE BENEFITS

You benefit from cleaner energy, low rates, local governance, and innovative programs.

What Are the Benefits?



LOWER RATES



LOCAL CONTROL
& INVESTMENT

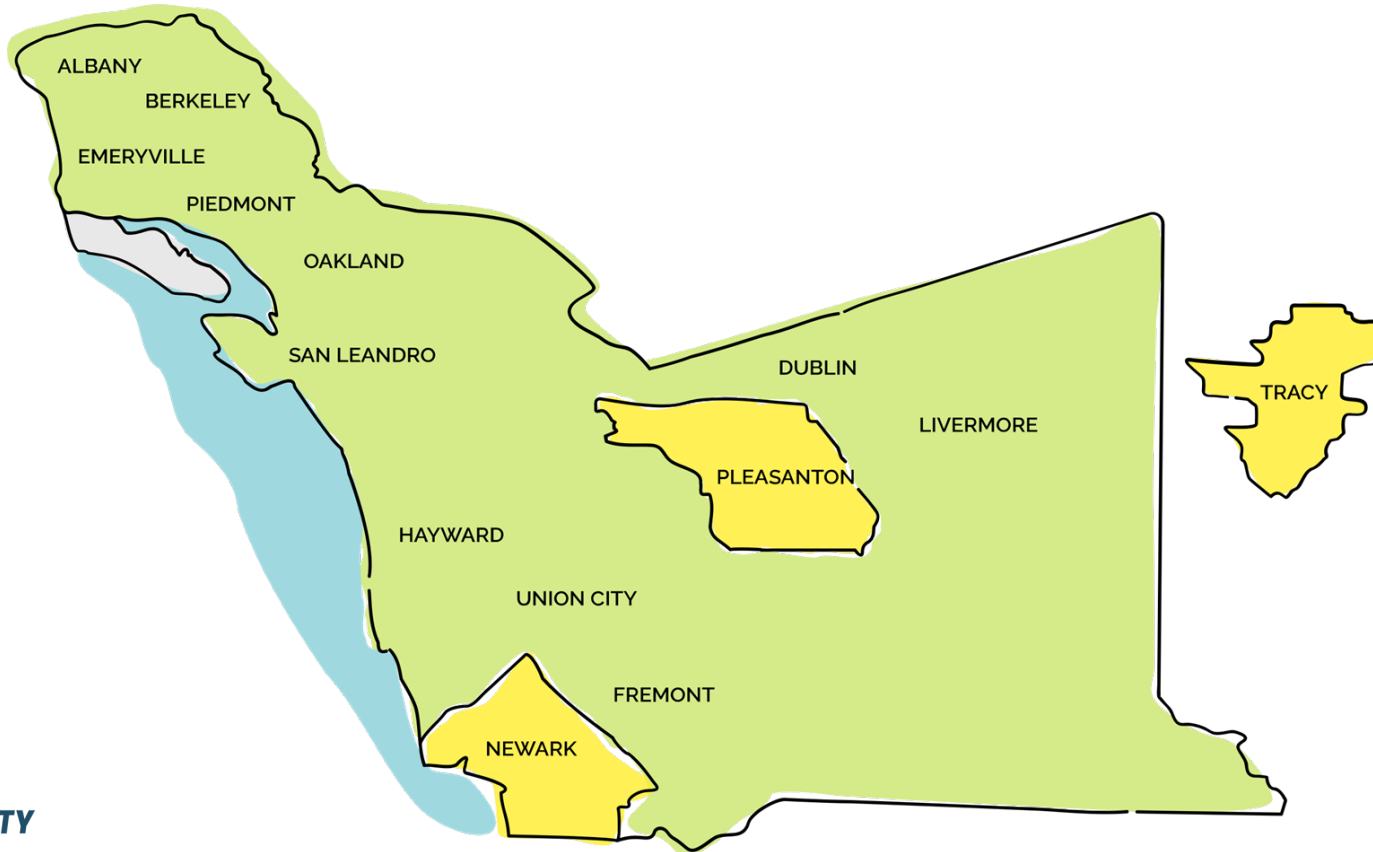


SUSTAINABILITY



CUSTOMER CHOICE
& PROGRAMS

EBCE Members

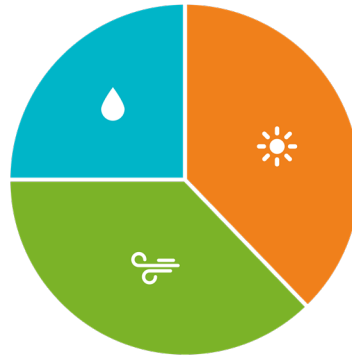


What Are My Options? ebce.org/change-my-plan



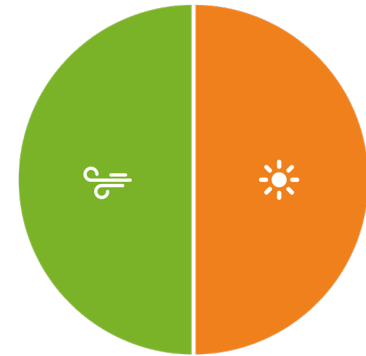
BRIGHT CHOICE

at least 5% more renewable energy than state requires at rates 1% below PG&E



BRILLIANT 100

100% carbon-free energy including hydropower at the same rates as PG&E



RENEWABLE 100

100% California solar & wind energy at 1 cent per kilowatt-hour above PG&E rates

Understanding Your Current Rate (pg 4)

EBCE 'Generation Charges' (C) are not additional charges; they replace PG&E charges, which appear as credits (F) on PG&E bills.

To calculate your savings and find more information on understanding your bill, go to ebce.org/understand-your-bill

The screenshot shows an 'ENERGY STATEMENT' from PG&E. Callout H points to the 'Rate Schedule: ET0UC-Bright Choice' line. Callout I points to the 'Net Charges 30.98' line. Callout J points to the 'Energy Commission Tax' line.

| ENERGY STATEMENT | | | |
|--|----------------------------|----------------------------|---|
| www.pge.com/MyEnergy | | Account No: [REDACTED] | - |
| | | Statement Date: 09/23/2020 | |
| | | Due Date: 10/14/2020 | |
| Details of East Bay Community Energy Electric Generation Charges | | | |
| 08/18/2020 - 09/16/2020 (30 billing days) | | | |
| Service For: [REDACTED] | | | |
| Service Agreement ID: [REDACTED] ESP Customer Number: [REDACTED] | | | |
| 08/18/2020 - 09/16/2020 | | | |
| Rate Schedule: ET0UC-Bright Choice | | | |
| Off-Peak Summer | 249.887000 KWh @ \$0.11391 | \$28.46 | |
| Peak Summer | 84.867000 KWh @ \$0.16735 | 14.22 | |
| Power Charge Indifference Adjustment Credit | | -11.17 | |
| Franchise Fee Surcharge Credit | | -0.21 | |
| Bright Choice | | -0.42 | |
| | Net Charges | 30.98 | |
| Energy Commission Tax | | 0.10 | |
| EBCE offers Bright Choice at a 1% discount to PG&E generation rates. Learn more at ebce.org/bill . | | | |
| Total East Bay Community Energy Electric Generation Charges | | \$30.98 | |

G. FRANCHISE FEE SURCHARGE

This fee is collected by PG&E to cover costs associated with rights to use public streets to provide gas and electric service. This fee is factored into EBCE's rate setting process.

H. RATE SCHEDULE

This line shows two things. The initial letter(s) and/or number combination show your rate schedule as determined by PG&E. For residential customers this is commonly E1 or TOUC. After the base rate schedule you will see the EBCE service you are on: Bright Choice or Brilliant 100. Renewable 100 customers will be charged based on the Brilliant 100 rate and will see an additional line item with the Renewable 100 premium.

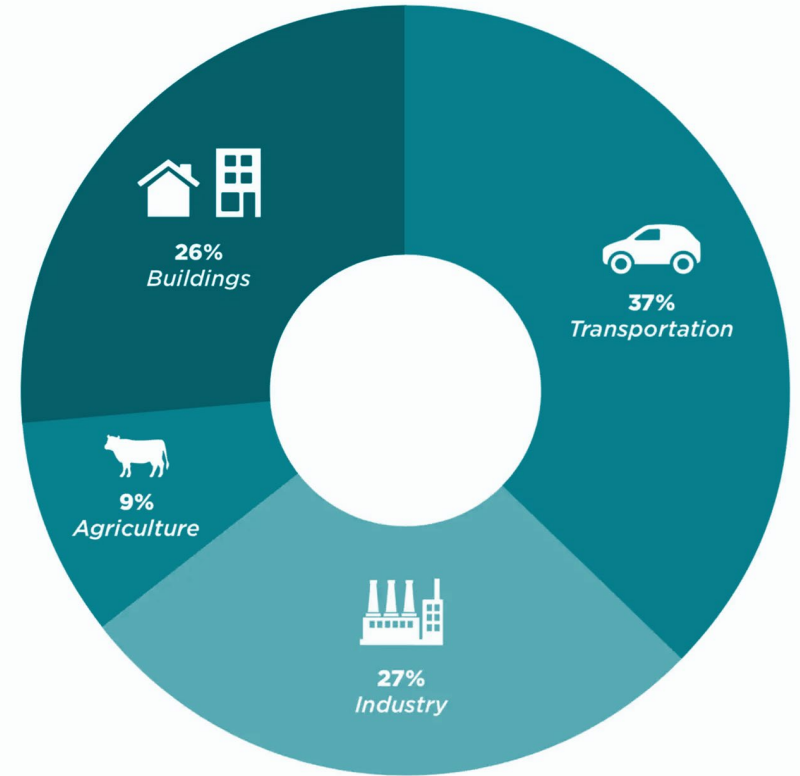
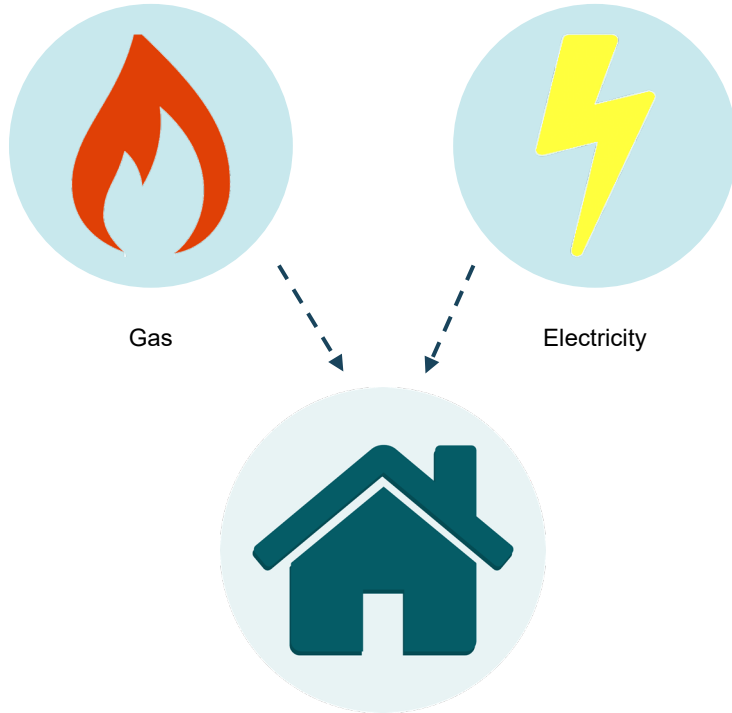
I. NET CHARGES

This is the amount EBCE collects for the power that you use.

J. ENERGY COMMISSION TAX

This fee is collected on behalf of the California Energy Commission and applies to all customers, regardless of service provider.

Our Buildings



Source: Building Decarbonization Coalition

Building Electrification

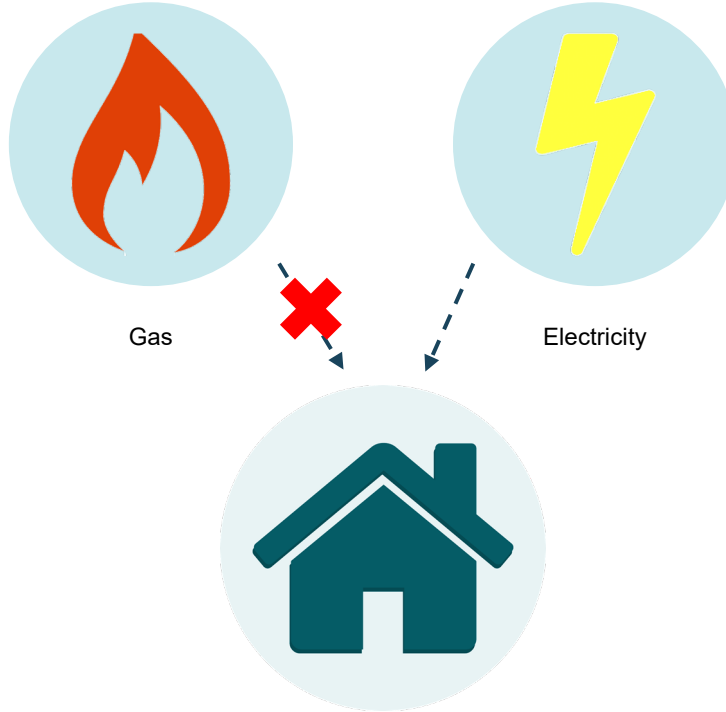
Gas Powered

Gas Water Heating

Gas Space Heating

Gas Clothes Drying

Gas Cooking



All-Electric

Heat Pump Water Heating

Heat Pump Space Heating

Heat Pump Clothes Drying

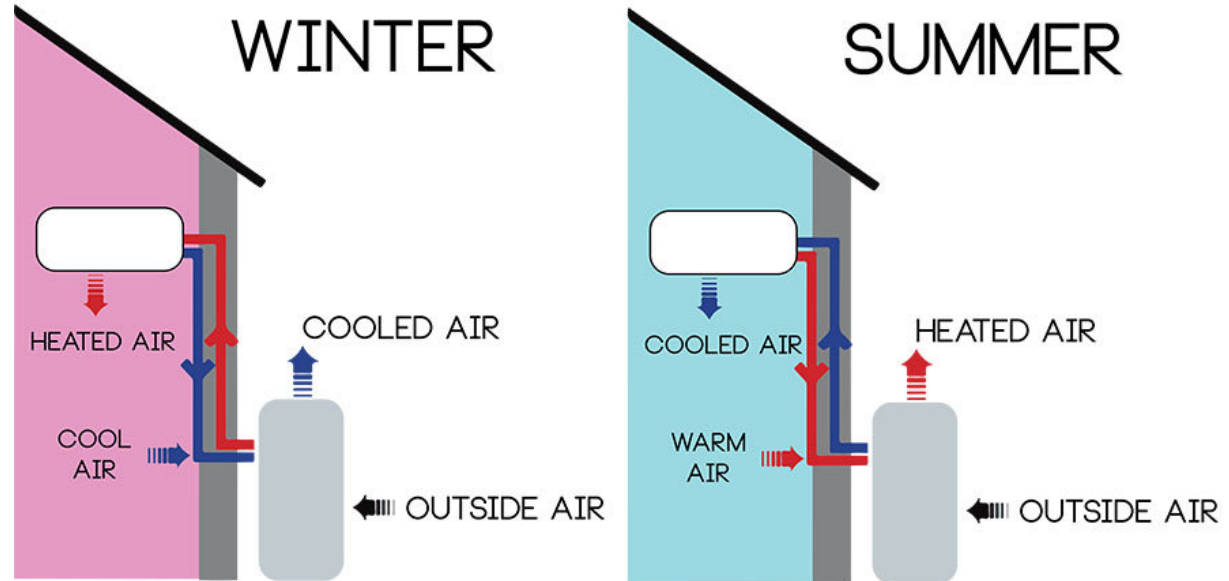
Induction Cooking

Electrification Technologies Heat Pump

Your refrigerator moves warmth from the inside to outside in order to keep food cold. Heat pumps do the same and can move in either direction to either heat or cool air or water.

Heat Pumps are

- Energy efficient
- All-electric
- Better for indoor air quality
- Capable of heating and cooling



Source: Amanda Reed, River Reporter

Electrification Technologies Induction

Induction Cooktops are

- Energy efficient
- All-electric
- Better for indoor air quality
- Safer
- Fast, powerful, and capable of specific cooking techniques

Induction technology works by using electricity to create a magnetic field which directly causes cookware to heat. This is different than gas or electric resistance which use flame and hot coils to heat cookware.

Induction is not electric coils



How Induction Works



Benefits of Electrification

Climate Change

Powering appliances with increasingly renewable electricity reduces your greenhouse gas emissions

Cost Savings

As our gas system ages and more people electrify, gas prices are projected to increase. Shield yourself by electrifying.

Resilience and Safety

Natural gas explosions and failures can be dangerous. Battery storage offers greater energy independence.

Health & Comfort

Electrification eliminates indoor air pollutants associated with the combustion of gas.

Green Jobs

Electrification opens doors for green careers helping us making the energy transition.

Equity

Frontline communities are greatest affected by adverse climate impacts. Electrification offers health and safety benefits.

How to Electrify

Contact a Home Energy Advisor

866-878-6008 or bayrenresidential.org

Access Rebates & home energy assessment!



\$300 Rebate
Heat Pump Dryer



**Up to \$1,000
Rebate**
Heating & Cooling



**Up to \$2,000
Rebate**
Water Heating



\$300 Rebate
Induction Cooking

Low-Cost Energy Efficiency

Check your temp!

- Set your thermostat to 68 degrees (or lower) in the winter and 78 degrees (or higher) in the summer
- Check your water heater - set it at 120 degree to save energy

Lighting

- Replace old light bulbs with high-efficiency LEDs to save energy and \$
- Automatic lighting controls make utilization more efficient

Air & AC

- Fans keep air circulating and you comfortable with less work and energy from your air conditioner
- Dirty air filters make your air conditioner work harder to circulate air. Cleaning or replacing filters monthly can reduce cost and increase efficiency.

Plug Load

- Unplug small appliances when not in use
- Save \$ by using electricity outside of 4-9pm when it's most expensive

Resilient Home + Webinars

Residential solar + battery backup

- Connect interested customers with a vetted solar installer for preferred pricing
- \$1,250 incentive to share power when demand is high

ebce.org/resilient-home



Power through life's disruptions.

New solar + home battery backup incentive available in Alameda County.

ebce Resilient Home

EAST BAY COMMUNITY ENERGY

Q & A



Habitat for Humanity is honored to partner with East Bay Community Energy. From their support of affordable housing to promoting women in leadership, EBCE cares about the communities and people they serve.”

— Habitat for Humanity East Bay/Silicon Valley



many others are working together to create a healthy, safe, and vibrant future for our community. Reach out to EBCE to hear about what is in the works and to make sure your business goals are aligned with your energy choices.”

— Rachel DiFranco, Sustainability Manager, City of Fremont



Thank You!



Questions? Give us a call:
1-833-699-EBCE (3223)



@PoweredbyEBCE



ncordoba@ebce.org

customer-support@ebce.org

Español

ebce.org/es

中文

ebce.org/cn