



The Office Gardens of the  
California Nursery Company  
Living History from 1884 to 1907 to 1934 to Today

Brought to  
You  
From the  
Shinn House  
Kitchen  
Pantry





# Janet Barton

- Retired IBMer
- On-and-off Merritt College Student, Landscape Horticulture
- Volunteer in gardens and historic archives at Shinn Park & Arboretum and California Nursery Historical Park
- Plant blogger “Illustrated Plant Nut”
- My daughter’s middle name is “Rose”
- I pulled out all of my roses during the previous drought
- Our tortoise loves roses...





# The Volunteer Caretakers of the Historic Nursery Gardens Since 1994

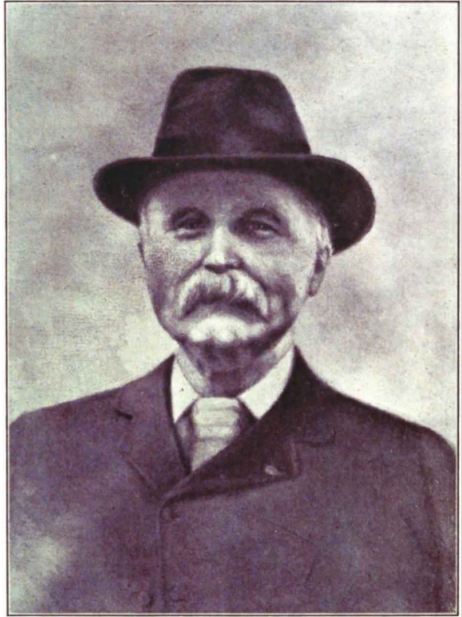


- **Preserving and restoring** our historic landscape
- **Creating** beautiful gardens for the public
- Making **connections** with the community
- Making **connections** with historical and horticultural organizations
- Always looking for **Volunteers!**  
Weeding, pruning, history, docents, fundraisers, secretary, accountant, newsletter



[CaliforniaNurseryGardenClub@gmail.com](mailto:CaliforniaNurseryGardenClub@gmail.com)

# Managers / Owners 1884-~1970



John Rock  
(1884-1904)



W.V. Eberly  
(1904-1918)



George C. Roeding  
(1918-1928)



George C. Roeding, Jr.  
(1926-1970)



Bruce,  
George III,  
Jerry Roeding

**Roeding Orchard**

**Old Adobe**

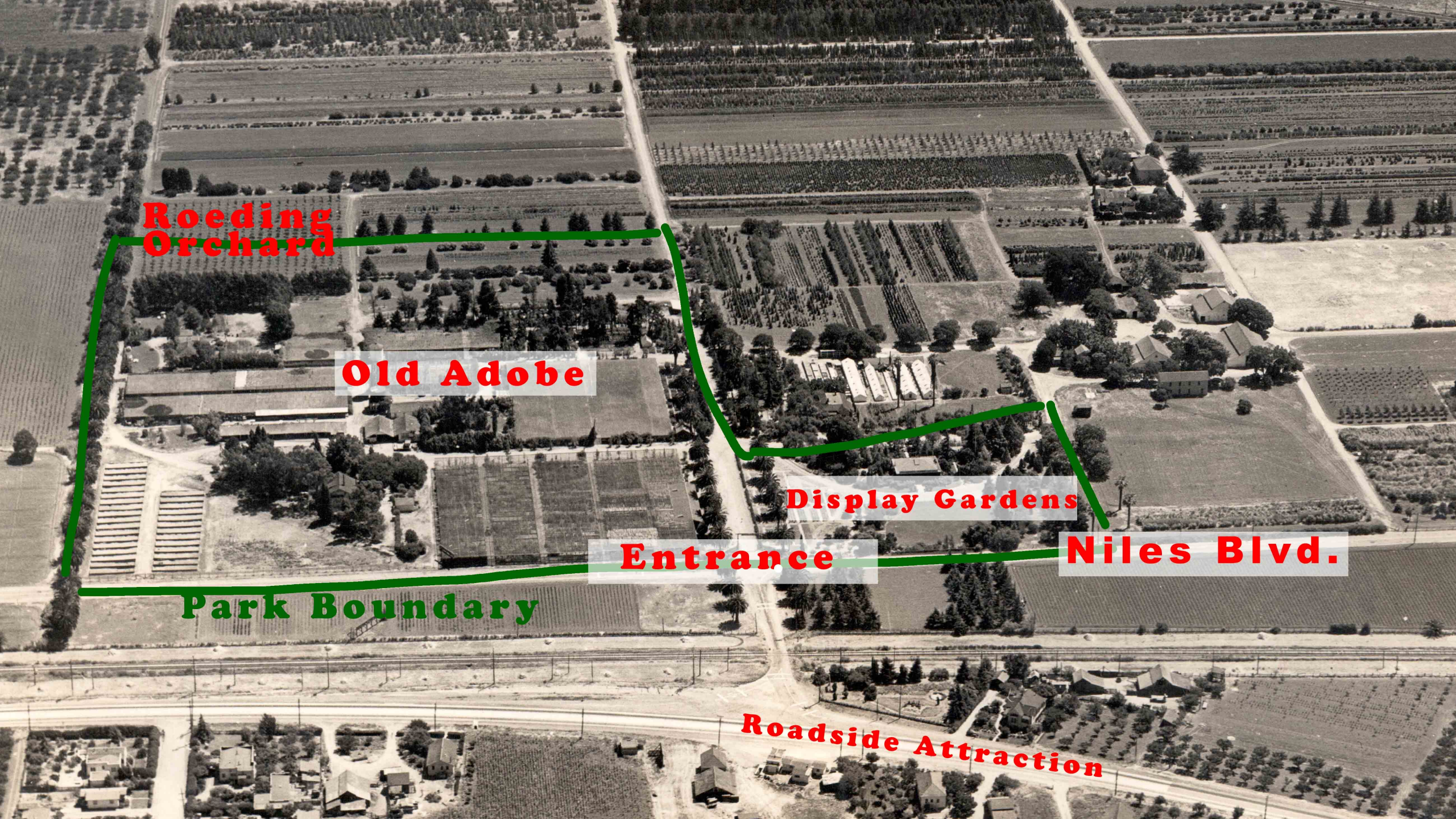
**Display Gardens**

**Entrance**

**Niles Blvd.**

**Park Boundary**

**Roadside Attraction**







California

Nursery Company,

Niles, Cal.

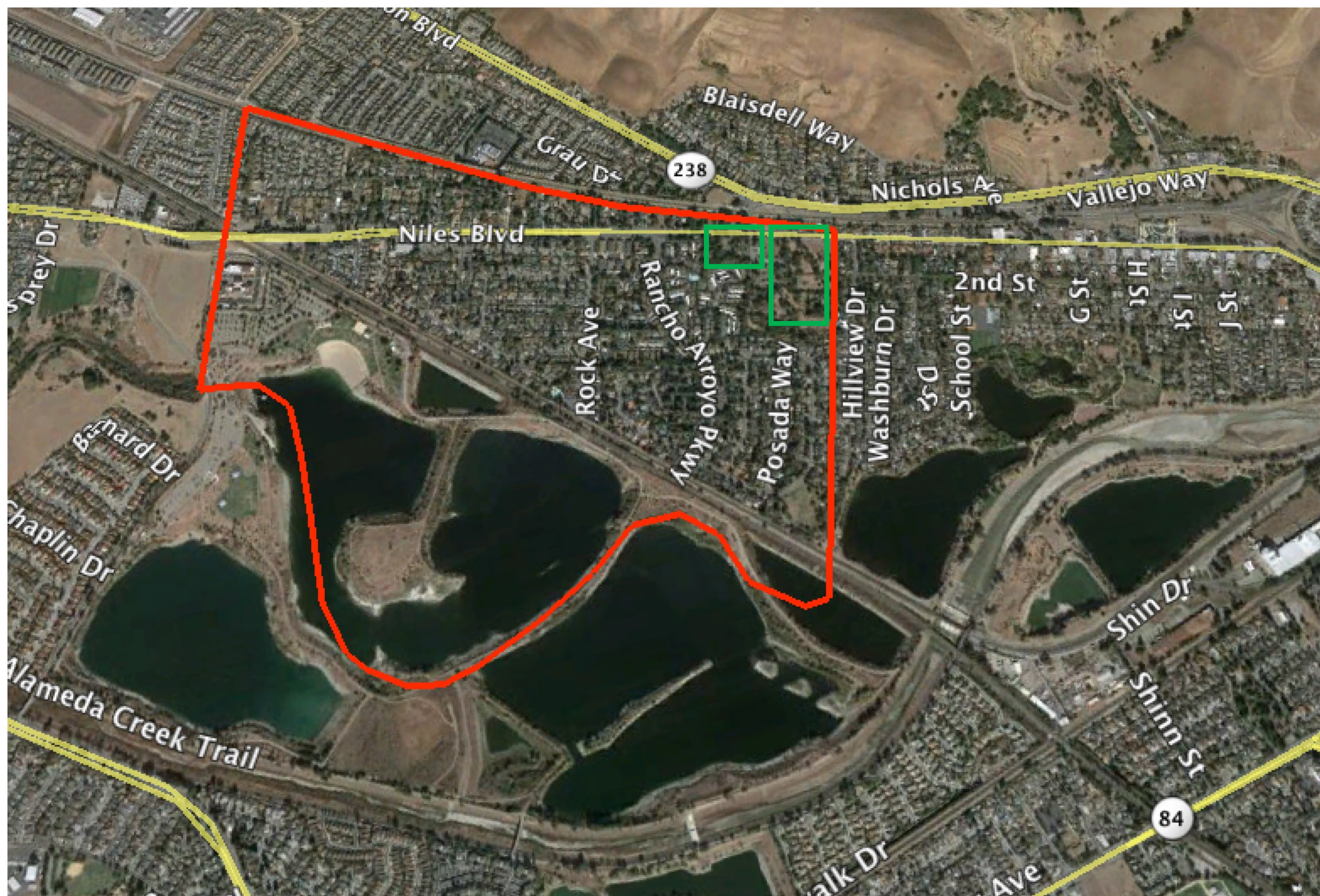
April, 19, 1889.

Scale - 400 ft. to 1 Inch.

John Rock and partners established the nursery in 1884 in Niles. There were 463 acres along Alameda Creek.

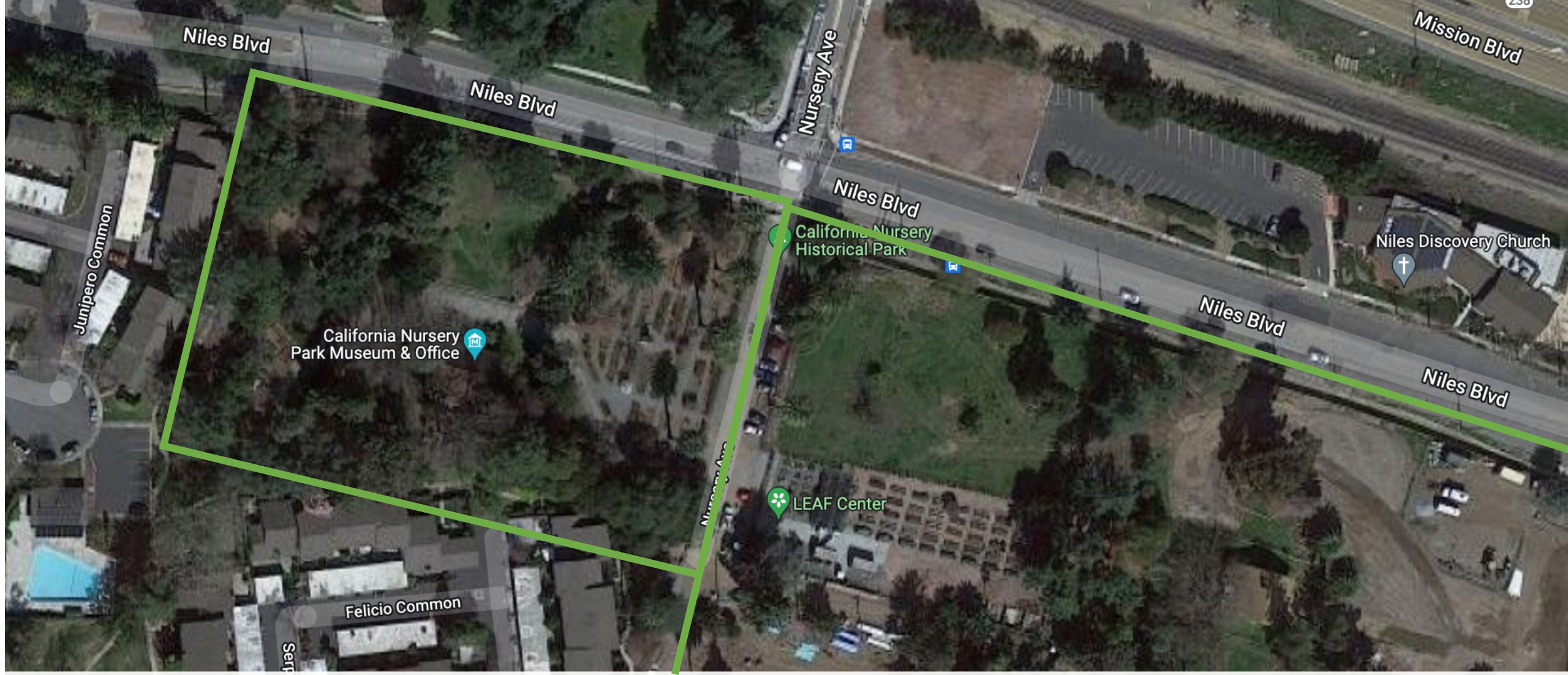
- CPRR Railroad
- Niles Station close by
- Water
- Rich soil
- Labor

Orchard books describe everything planted here.

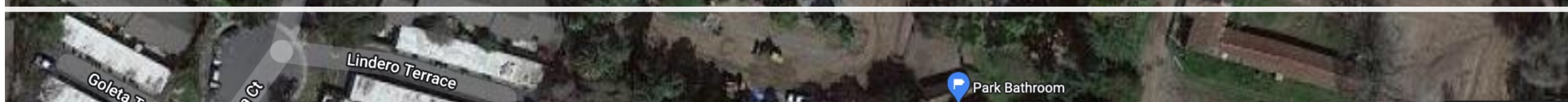


John Rock and partners established the nursery in 1884 in Niles. There were 463 acres along Alameda Creek.

- Railroads
- Niles Station
- Roads
- Water
- Rich soil
- Labor



The park is the last 20 acres of the original 463 acres of the historic California Nursery Company established in 1884. The office gardens are 4 acres.



# A well documented history

83 years of online catalogs & 36 years of movies scanned in and more to come.



## California Nursery Company - Roeding Collection

The California Nursery Company - Roeding Collection preserves the history of the California Nursery Company in a museum and historical park in Fremont, California.

The California Nursery Company - Roeding Collection's digital collection at California Revealed consists of moving images and text materials from the 1920 through 1960s. The collection primarily consists of richly illustrated garden catalogs and planting guides, 90 items



Many more items to be sorted, catalogued, and scanned

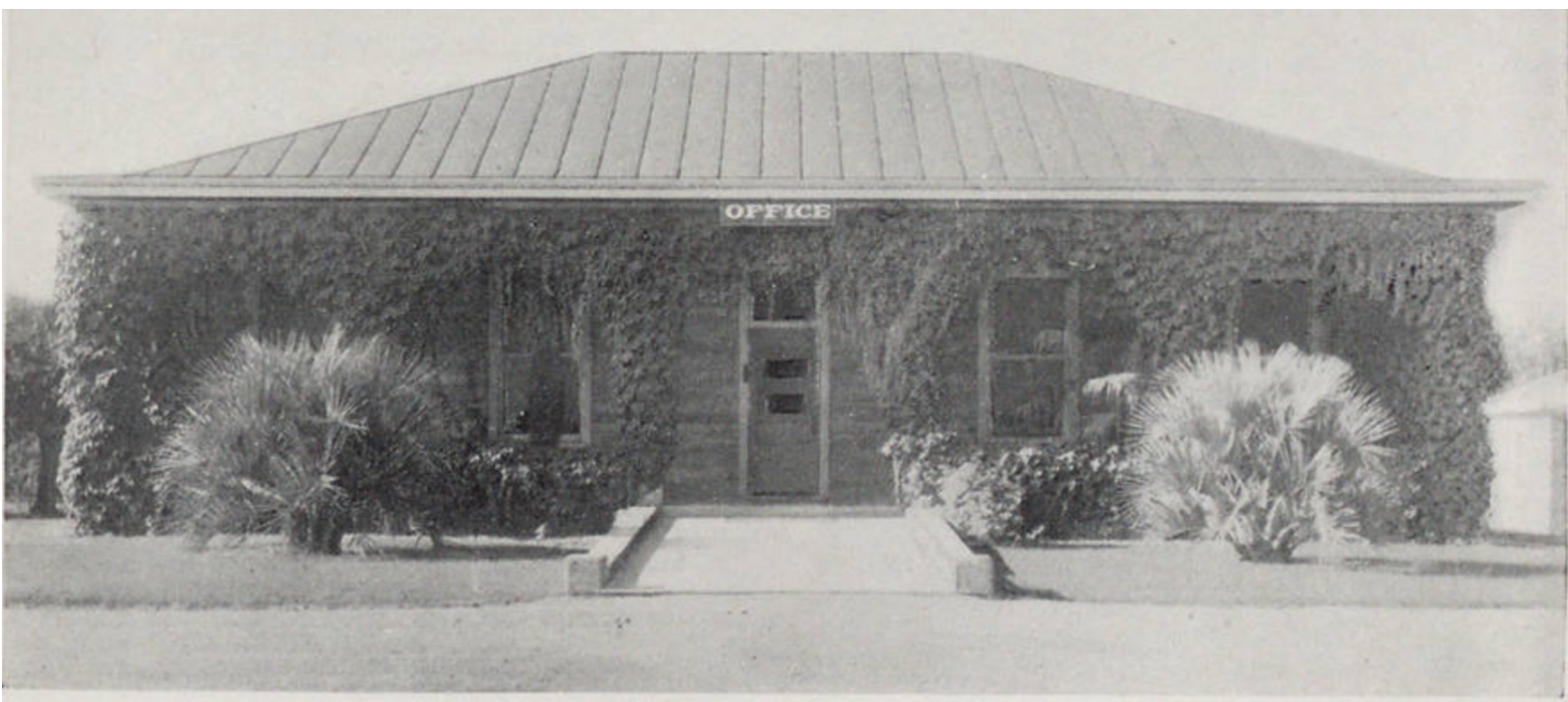
**Volunteers wanted!**

Four articles in Eden Journal



One article is a "User's Guide" to nursery research

The new office building  
was built ~1907



The beginning of the  
gardens!



1918 Catalog

# *Panama-Pacific International Exposition 1915*



The nursery provided many plants, including these fully grown palms. Around 200 palms were planted at the Exposition. They had an outdoor exhibit that included 400 roses, between the Hoo-Hoo House and the Horticultural Palace.

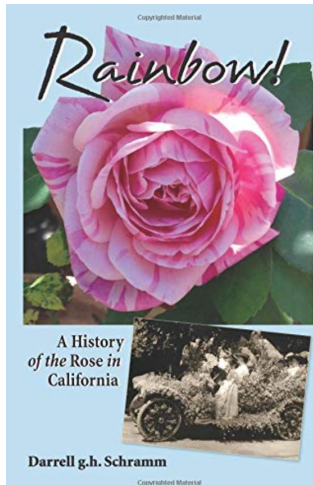




# *'Niles Cochet'*

Sported from the tea rose,  
'Maman Cochet'

Introduced in 1906 as 'Red  
Maman Cochet'





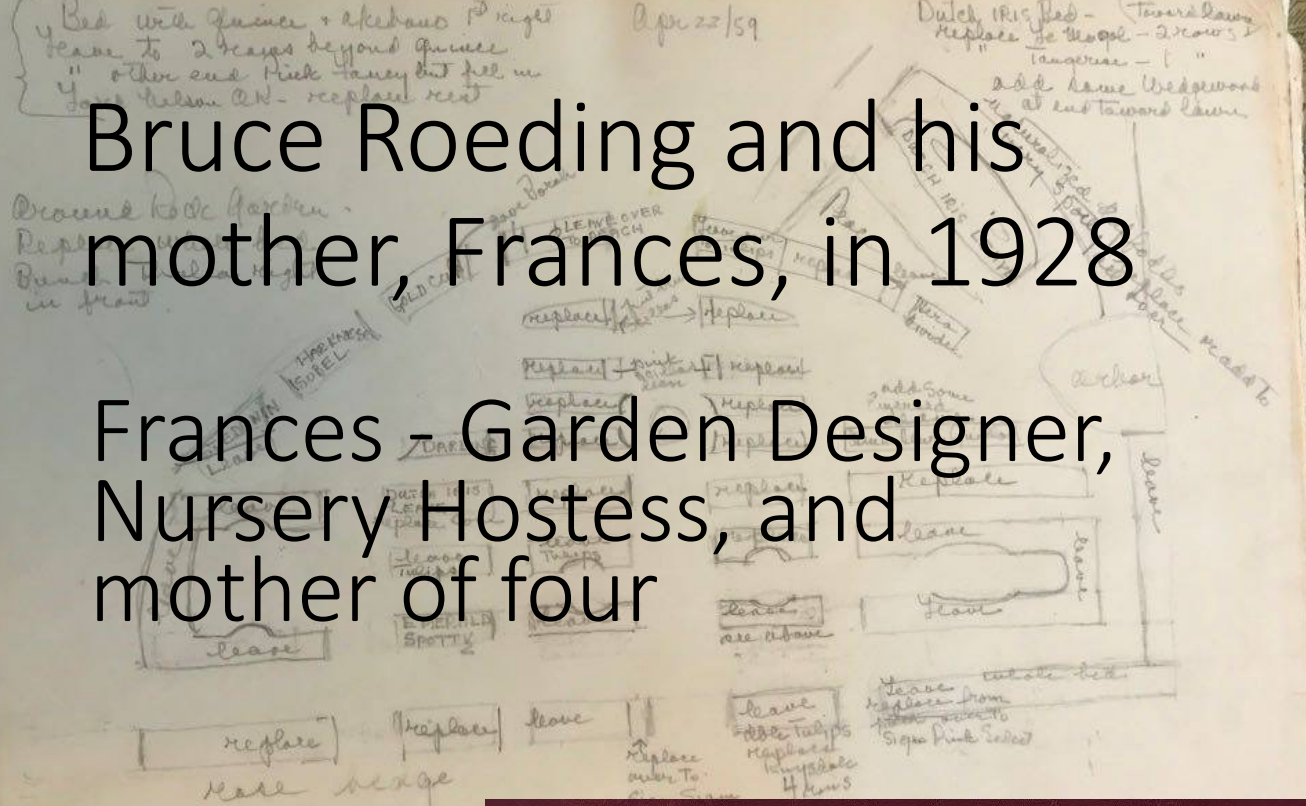


## George C. Roeding Jr. 1926-1970

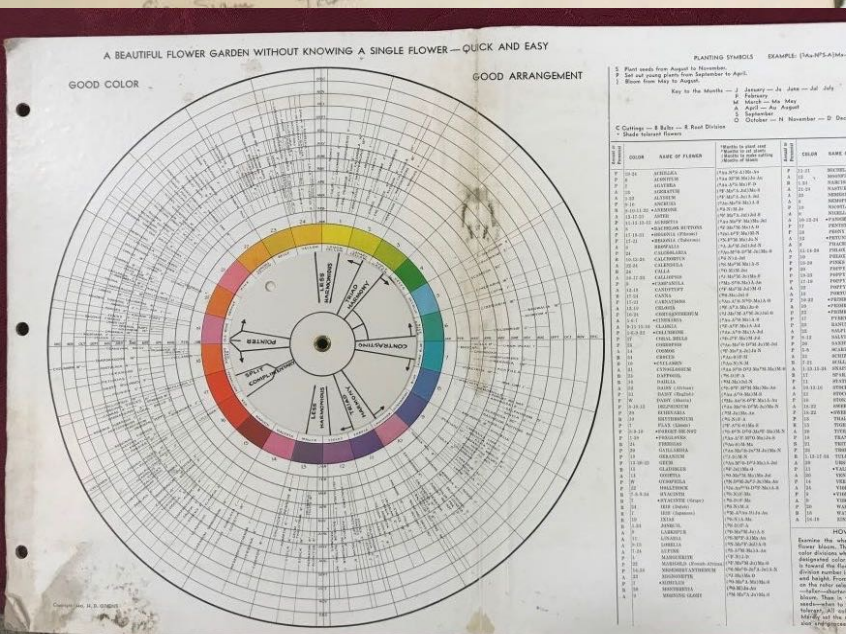
- Developed retail stores
- Master marketing
- City of Fremont Recreation Commission
- East Bay Regional Parks

# Bruce Roeding and his mother, Frances, in 1928

Frances - Garden Designer, Nursery Hostess, and mother of four



Adobe Nov 1959  
 Replaced following beds  
 Along front of Adobe - Mexican Marig  
 Other side " - City of Heavens  
 Both sides front door - Red Impatiens  
 Bed to right of drive - Parrot Bander  
 front  
 Added more to Sunlight - right  
 of Hill  
 1 row of King & Queen of Blues  
 Nycerates tall sides path (front)



The Show Gardens featured the latest flowering bulbs, roses, shrubs, vines, and trees.



New plants each year.



# Retail nursery for building our home gardens, suburbs, institutions ...

## Motor to Niles and Select your ROSE GARDEN

**BUSH ROSES**  
**TREE ROSES**  
NUMBER 1 GRADE

Save 10%...a short, pleasant drive rewarded by our 10% discount on cash orders of \$5 or more taken with you.

*Our new bushes are best in years...see them yourself!*

**ROSE HEADQUARTERS**  
-More than 150 VARIETIES  
-FAMOUS for ROSES the World Over

**4 Reasons why these Roses give you "Plus-Value"...**

1. Tops in Quality...No. 1 grade only.
2. Individually grown, graded and handled.
3. Many more blooms produced by these sturdy bushes.
4. Properly ripened, in ideal condition to plant now.

**CALIFORNIA NURSERY CO.**  
Main Highway, just North of NILES

**Ready Now!**

**Home Orchard Fruit Trees**

**Rose Fields and Test Gardens**

**Office**

**Rock Garden**

**Rare Specimen Trees**

**TOUR OF THE NURSERY DURING OUR "BULB SHOW"**

**EVERYTHING FOR THE GARDEN**

**100,000 BULBS IN BLOOM**

**Outdoor BULB SHOW**  
Mid-March to Mid-April  
- Each Year

**Rancho Arroyo de la Alameda - 300 Acres -**

**CALIFORNIA NURSERY CO. 75th Year**

VISIT our 9th Annual Outdoor  
**BULB SHOW**  
IN OUR SHOW GARDENS AT  
**NILES** (Southern Alameda Co.)  
**MARCH 16 through APRIL 14**

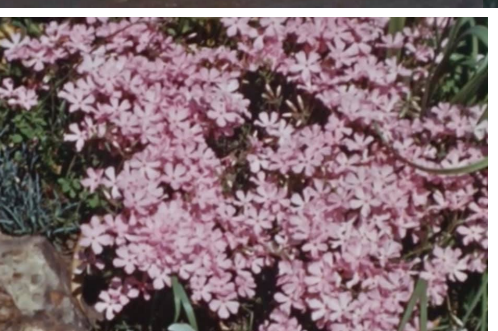
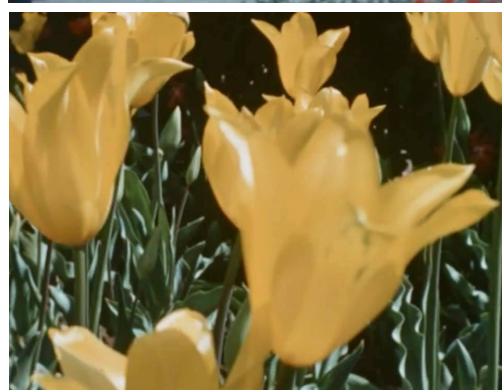
DAFFODILS at their best during March, Tulips in April. More than 100,000 daffodils, tulips, Dutch iris and other bulbs in bloom! 425 varieties! Many interesting features [see map at left], and 300 acres of living beauty to thrill garden lovers. Entertainment Saturday and Sundays. Enjoy an outing in the peace & beauty of our restful gardens. Mark your calendar...right now! [Admission: 25 cents, Saturdays and Sundays only, credited in full on purchase of \$1 or more. Week days, no admission charge.]

**The largest assortment of top-quality plants on the Pacific Coast. SELECT AND PLANT NOW!**

**75th (DIAMOND JUBILEE) YEAR**  
**CALIFORNIA NURSERY CO.**  
GEORGE C. ROEDING, Jr., Pres. NILES, California



1934 film  
on California  
Revealed



1937





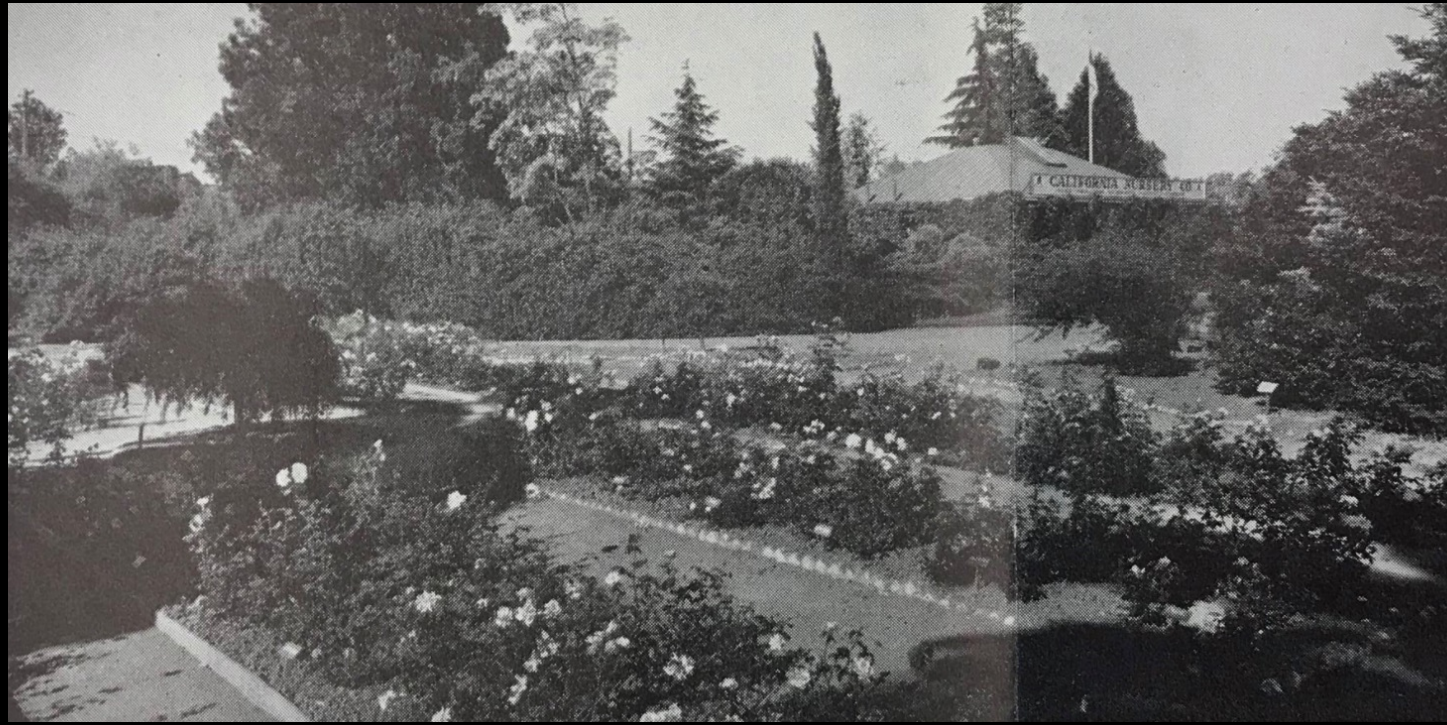




# The Show Gardens

Bulbs in the spring

Roses in the Summer



# Making connections

Sally Mayock Hartley in 1946 and for a visit in 2018





# Making Nursery Family Connections

Kawaguchi & Roeding family reunion at the Roeding Centennial  
October 14, 2017

In the historic Old Adobe Garden



# Making Apple Connections



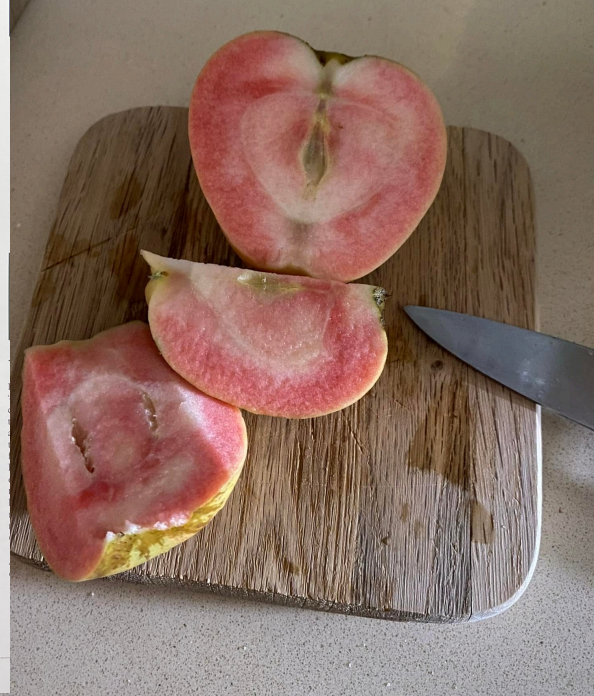
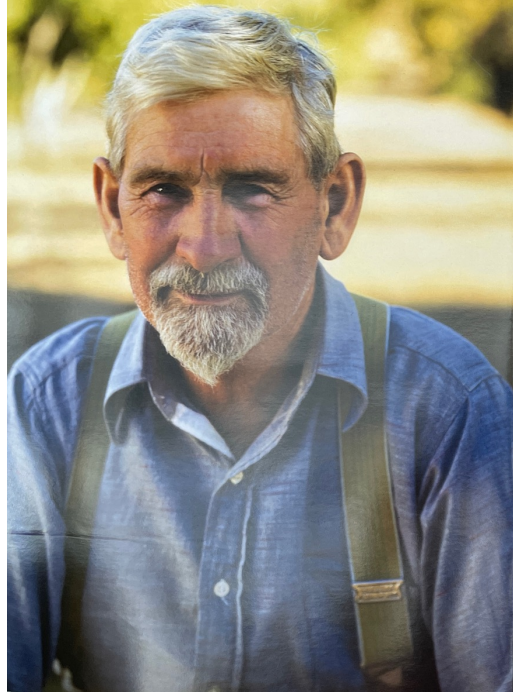
Visiting Apple Experts,  
Dan Bussey and Brandon Buza before CiderCon

# The California Nursery Company Archives - Far and Wide

JANET BARTON



About seventy years ago, I was working in the nursery at the California Nursery Company in Redding, Oregon. The park of the 463-acre site is now a city park. In 1989, Mrs. Niles, now in Niles, now in 1989, Mrs. Nursery Company wondered about the historic display. Windmill in the garden. I started every catalog, to people to historic nursery. Park legend. Etter apple. Redding orchard and unfortunat

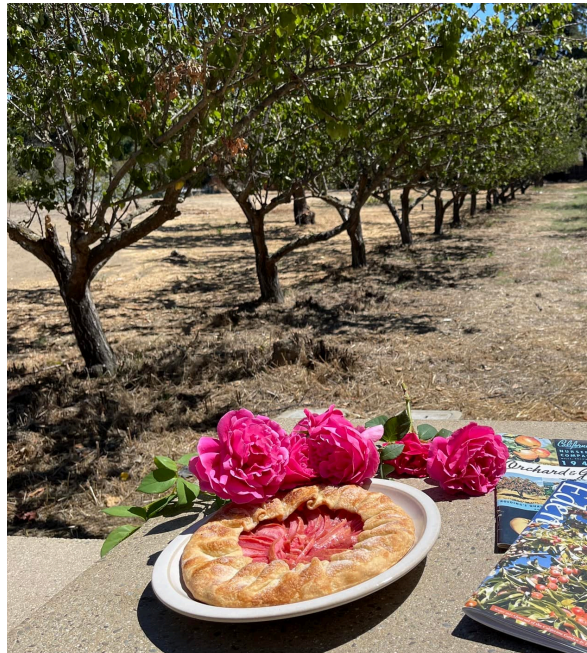


California  
ems re-  
y Com-  
se His-  
ents the  
uns who  
includ-  
Califor-  
egan in  
seumof-

fourth,

ses still  
l olives,  
pricots,  
namen-  
planted  
4-1904.  
y of the  
rows of  
d many  
our ros-  
one of  
ctions.

re than  
nursery  
he state  
on the  
cebook  
1. (cali-  
com).



## Bringing Back Albert Etter's Apples

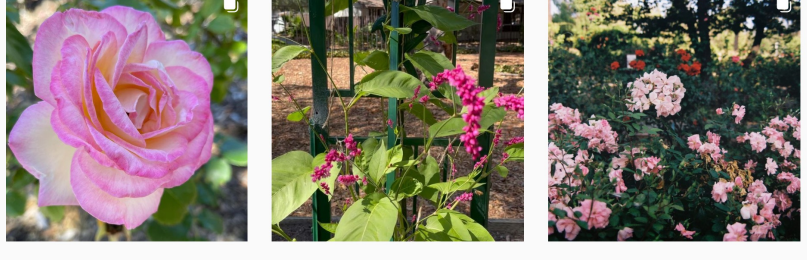
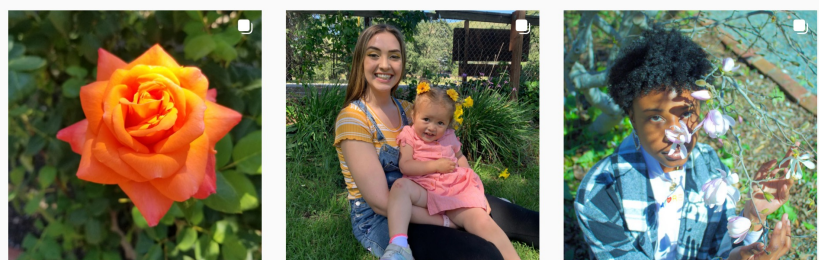
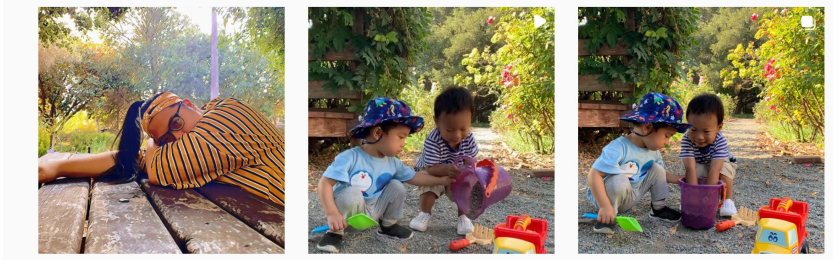
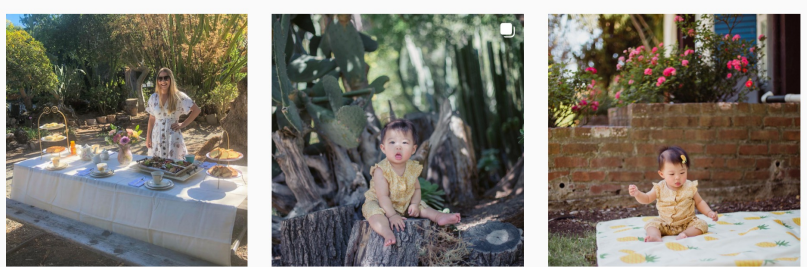
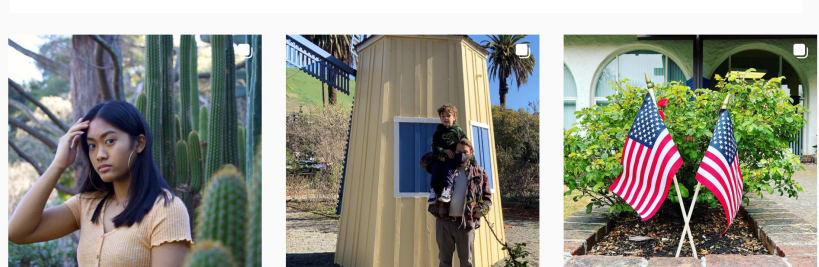
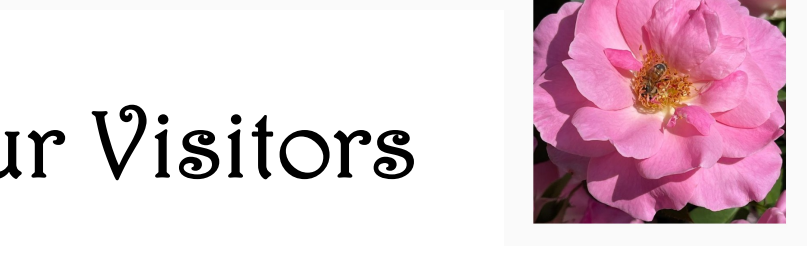
Looking forward to the future restoration of the Test Orchard with varieties of peaches, pears, figs, plums, and apples that were significant to the nursery.

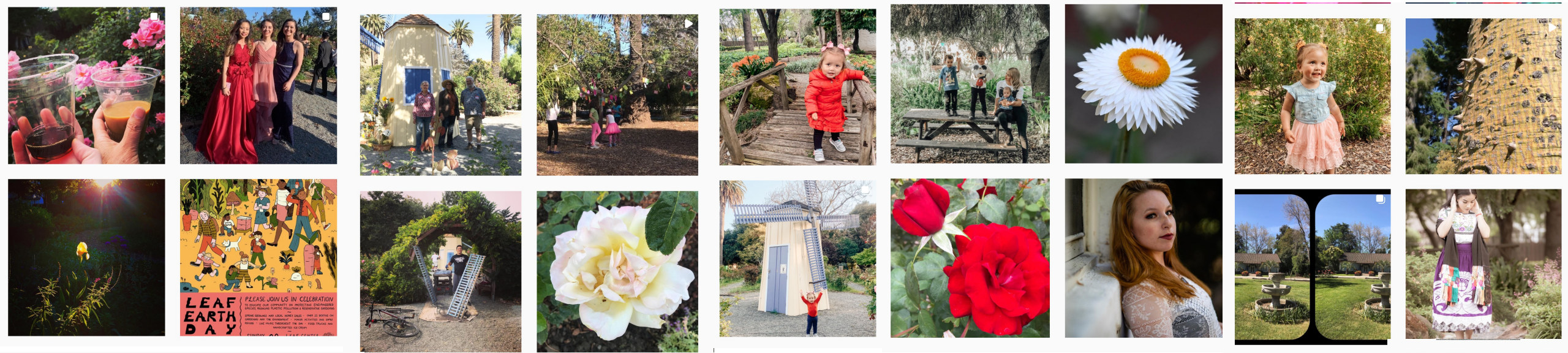
# Connecting with the Gardener Community Twenty-Eight Years of volunteerism



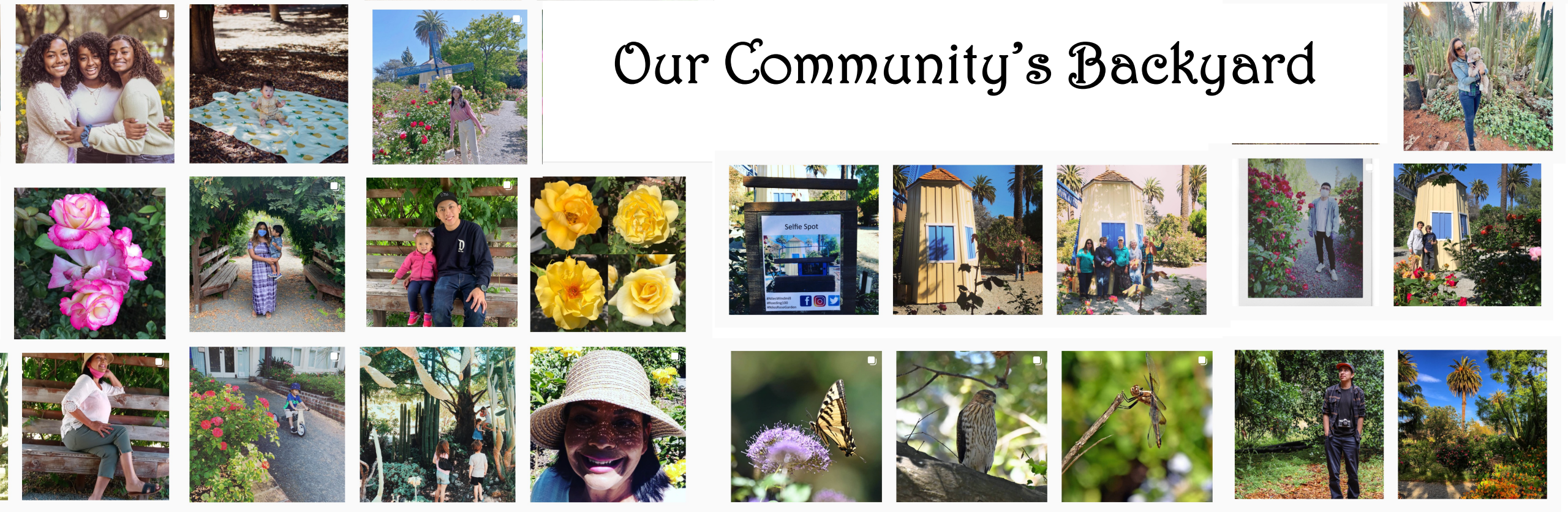


# Connecting with our Visitors





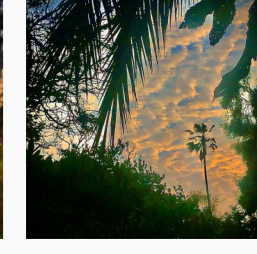
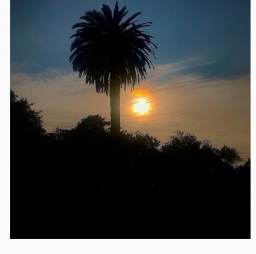
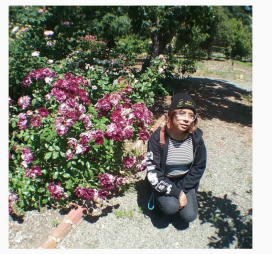
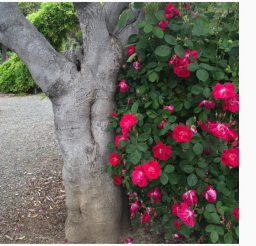
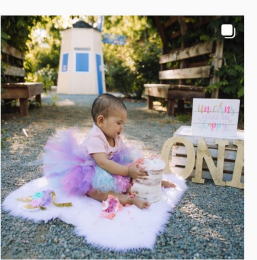
# Our Community's Backyard







Enjoyed & Explored  
by Many Since 1907, 1933, Today



A lush rose garden filled with various colored roses (yellow, orange, pink, red, white) in the foreground. In the background, there is a yellow windmill with blue shutters and blades, surrounded by dense green trees and foliage. A person is visible tending to the roses near the windmill.

**GARDENS:** To help: [californianurserygardenclub@gmail.com](mailto:californianurserygardenclub@gmail.com)

Monday / Thursday 10-12

**ARCHIVES:** To help: Joyce Blueford: [blueford@msnucleus.org](mailto:blueford@msnucleus.org)

**DONATE:** find our donation page on our website

**WEBSITE:** <https://sites.google.com/view/thecalifornianurserygardenclub/>

Visit the  
Shinn House  
Today 1-4:00

Local Nursery  
1873-1887

